

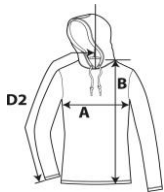
887L



Women's Fashion Basic Long Sleeve Hooded Tee

DETAILS

Weight	150.0 G/SqM
Content	100% Ring Spun Cotton
Features	Fabric 30/1 High stitch density for smoother printing surface Semi-fitted contoured silhouette with side seam and display tape Relaxed unlined hood with Contrast drawcord Three-needle neck, sleeve and bottom hem TearAway label Oeko-Tex® Standard 100 Certified
Sizes	S-2XL
Case Packs	LS - L2XL 36 PIECES
Colours	10
SKU's	50



SPECIFICATIONS

Centimeters	Tol-	Tol+	S	M	L	XL	2XL
Chest (A)	1.905	1.905	43.815	48.895	53.975	59.055	64.135
Length from HPS (B)	2.540	2.540	64.770	66.040	68.580	71.120	72.390
Sleeve length (centre back) (D2)	2.540	2.540	78.740	80.645	81.915	83.820	85.725
Inches	Tol-	Tol+	S	M	L	XL	2XL
Chest (A)	0.750	0.750	17.250	19.250	21.250	23.250	25.250
Length from HPS (B)	1.000	1.000	25.500	26.000	27.000	28.000	28.500
Sleeve length (centre back) (D2)	1.000	1.000	31.000	31.750	32.250	33.000	33.750

S-2XL

COLOURS	Code	Comments
Black	036	
Caribbean Blue	308	
Heather Blue	321	35% Cotton, 65% Polyester
Heather Dark Grey	334	35% Cotton, 65% Polyester
Heather Green	322	35% Cotton, 65% Polyester
Heather Purple	232	35% Cotton, 65% Polyester
Hot Pink	299	
Navy	032	
Red	338	
White	030	

CHANGES

Total Net Change 0 SKU's